

BUILDING INSTALLATIONS AND ELECTRICAL SYSTEMS

The right electrical tester for all applications.
The user guide provides an overview of electrical test segments and working ranges.



Working ranges	AC-tiveFinder	AC-tiveTester	AC-tiveMaster	MultiMeter-Pocket	MultiMeter-Compact	MultiClamp-Meter Pro	LAN CableChecker	AC-Tracer	CableTracer Pro
Detecting AC	24 - 1000 V contactless	–	110 - 230 V	110 - 230 V contactless	110 - 230 V contactless	110 - 230 V contactless	–	–	110 - 230 V contactless
Locating Electrical/metal lines	–	–	–	–	–	–	Zero-potential	200 - 250 V Mains voltage	12 - 250 V Zero-potential Mains voltage
Verifying Function/continuity test	–	–	Continuity / Phase	Continuity	Continuity	Continuity	Continuity	–	–
Identifying Voltages	–	6, 12, 24, 50, 120, 230, 400 V	12, 24, 36, 50, 120, 230, 400, 690 V	–	–	–	–	–	12, 50, 120, 230, 400 V
Quantifying Units	–	–	–	V, A, Ω	V, A, Ω, F, %, Hz	V, A, Ω	–	–	–
Overvoltage categories CAT							–		

- Detecting**
Detecting electrical alternating fields / potential

- Locating**
Locating line routing with transmitter and receiver

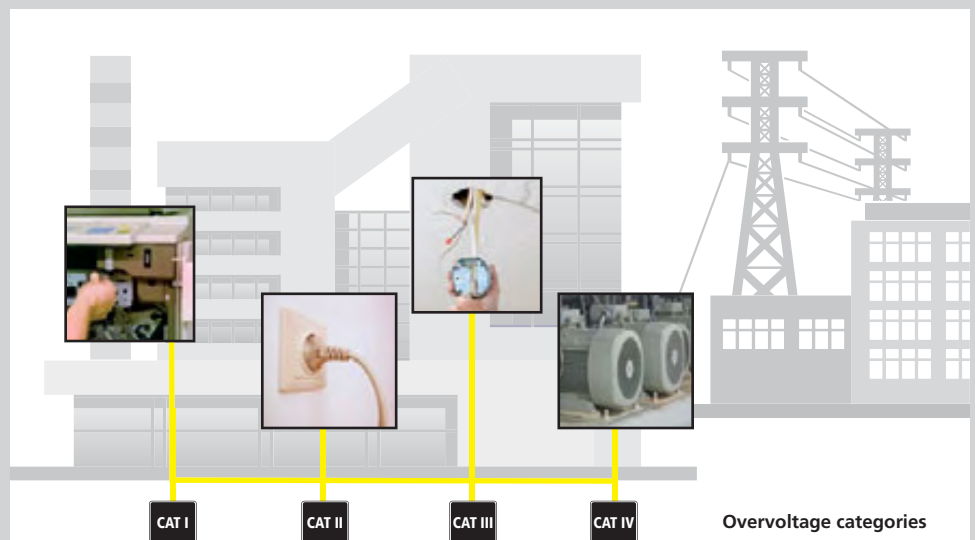
- Verifying**
Function and continuity test

- Identifying**
Identifying voltages

- Quantifying**
Determining electrical variables

- Overvoltage categorie**
Safety classification of working voltage and voltage peaks

Electrical variable	Description	Unit	Alternating = current AC / Direct current = DC
U	Voltage	V (volt)	AC / DC
I	Current	A (ampere)	AC / DC
R	Resistance	Ω (ohm)	DC
C	Capacitance	F (farad)	DC
f	Frequency	Hz (hertz)	AC
V	Duty factor	% (percent)	AC



Voltage tester

AC-tiveFinder

NEW



**Contactless handy voltage tester –
Work safely on electrical lines**

- Contactless detection of live lines from 24 to 1000 V/AC
- Locates electrical voltages in cables, sockets, bulb sockets and fuses
- Finds breaks in wires and cables
- Extremely high sensitivity for tracing lines at great depths (Zoom)
- Clearly visible LED for signalling electrical voltages
- Super-bright, integrated flashlight with separate ON/OFF button
- Rugged, impact-resistant quality enclosure

Voltage ranges:

V/AC 24 ...1000, Frequency 50 ... 60 Hz

Inclusive: AC-tiveFinder, batteries

ORDER NO.	EAN-CODE	PU
083.010A	4 021563 671144	5

PT



AC-tiveTester

NEW



**Universal voltage tester for the entire
electrical system of buildings**

- Reliable and fast voltage tester with the most commonly used nominal voltages
- Automatic AC voltage and DC voltage test
- Automatic range and function changeover for direct testing and measurement
- Operates without batteries
- Rugged, practical enclosure in space-saving mini format

Voltage ranges:

6, 12, 24, 50, 120, 230, 400 V/AC
+/-6, 12, 24, 50, 120, 230, 400 V/DC

LED indicator:

6, 12, 24, 50, 120, 230, 400 V Polarity plus/minus

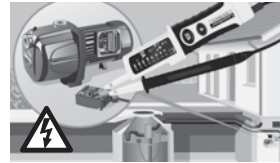
ORDER NO.	EAN-CODE	PU
083.020A	4 021563 671151	5

PT



AC-tiveMaster

NEW



**Reliable measuring device for testing voltage
and continuity**

- Voltage tester with the most commonly used nominal voltages
- Automatic AC voltage and DC voltage test
- Automatic range and function changeover for direct testing and measurement
- Single-phase and rotary field test with phase sequence display
- Single-pole phase testing
- Automatic continuity tester with acoustic signal
- Safety self-test (AC warning) as from 50 V, operates in emergency mode without battery
- Rugged, practical enclosure with lockable test prod spacing (for standard EU connector)

Voltage ranges: 12, 24, 36, 50, 120, 230, 400, 690 V AC/DC
Peak current: 1s < 0,2 A / 1s (5s) < 3,5 mA

Inclusive: AC-tiveMaster, batteries

ORDER NO.	EAN-CODE	PU
083.021A	4 021563 671168	5

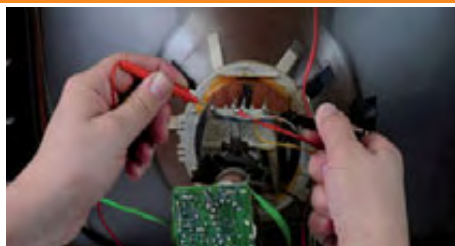
PT



Multimeter, clip-on ammeter

MultiMeter-Pocket

NEW



- Fully protected universal multimeter – for measurements in all building installations**
- Precise voltage, current and resistance measurement
 - Automatic continuity tester
 - Diode test function for determining integrity and polarity
 - Integrated contactless voltage indicator
 - Single-pole phase testing
 - Fully protected design in all measuring ranges prevents operating errors
 - Super-bright integrated flashlight for illuminating test point
 - Large, easy-to-read LC display



- Voltage ranges:**
V/AC: 0...600 V ±1,2%, V/DC: 0...600 V ± 0,5%
- Current range:**
A/AC: 0...200 mA ± 2,5%, A/DC: 0...200 mA ± 2,0%
- Resistance range:**
0...20 Mohm ± 0,8%

Inclusive: MultiMeter-Pocket, batteries

ORDER NO.	EAN-CODE	PU
-----------	----------	----

083.032A	4 021563 671229	5
----------	-----------------	---



PT

MultiMeter-Compact

NEW



- Professional multimeter with all functions for exact electrical measurement**
- Precise voltage, current, resistance, capacitance, frequency and duty factor measurement
 - Automatic range changeover and manual range preselection
 - Automatic continuity tester
 - Diode test function for determining integrity and polarity
 - Integrated contactless voltage indicator with acoustic, visual and vibration warning
 - High measurement resolution for precisely determining different measurement variables
 - Compact, impact-resistant enclosure with base support and selector switch
 - Large, easy-to-read LC display



- Voltage ranges:** V/DC: 0...600 V, ± 0,5%, V/AC: 0...600 V, ± 1,2%
- Current range:** A/DC: 0...10A, ± 2,5%, A/AC: 0...10A, ± 3,0%
- Resistance range:** 0...20 Mohm ± 0,8%
- Capacitance range:** 0...100 µF, ± 3,0%
- Frequency range:** 0...10MHz, ± 1,5%
- Duty factor range:** 0,1...99,9 %, ± 1,2%

Inclusive: MultiMeter-Compact, 2 test prods, batteries

ORDER NO.	EAN-CODE	PU
-----------	----------	----

083.034A	4 021563 671236	5
----------	-----------------	---



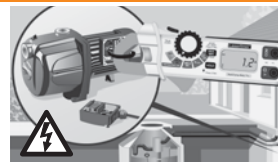
PT

MultiClamp-Meter Pro

NEW



- Professional current and voltage clamp meter with true r.m.s. measurement**
- Measurement in all closed current circuits (AC/DC)
 - Automatic continuity tester with acoustic signal
 - Automatic diode measurement
 - Peak-HOLD function for determining short-term making current
 - High measurement resolution for precisely determining current, voltage and resistance
 - Integrated contactless voltage indicator to quickly determine live parts
 - MIN/MAX function for determining changing measurement variables
 - Bright LED lighting for integrated test point illumination
 - Backlit LC display with bar graph display



- Max. input power:** A AC / V DC: 200A (PEAK 282,8A), V AC/DC: 600 V AC/DC
- Resistance, continuity test:** 600 V AC/DC
- Current range:** A/AC 0...200 A, ± 2,5%, A/DC: 0...200 A, ± 2,0%
- Voltage ranges:**
V/AC 0,2...600 V, ± 1,5% V/DC: 0,2...600 V, ± 1,0%
- Frequency range:** 50/60Hz AC

Inclusive: MultiClamp-Meter Pro, 2 test leads, batteries

ORDER NO.	EAN-CODE	PU
-----------	----------	----

083.040A	4 021563 671205	5
----------	-----------------	---



PT

Cable detectors

The LAN CableChecker is suitable for analysing multimedia cable installations such as RV, radio, SAT and telephone wiring or LAN computer networks.



Comprehensive accessories set for testing the most commonly used types of plug-in connections



Adjustable test signal volume



Assignment of individual conductors in LAN network cables

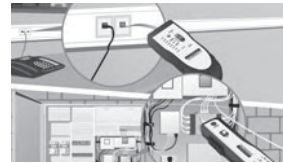
LAN CableChecker

NEW



Cable tracer set with transmitter and receiver for LAN, SAT, TV, telephone, audio cables

- Tests wire allocations and analyses line routing
- Checks LAN- network cable assemblies (assigns the individual conductors).
- Analyses LAN, SAT, TV, telephone, audio and other cables in electrical systems
- Integrated continuity tester
- The receiver traces cables up to a depth of 5 cm – contactless.
- Comprehensive accessories set for testing the most commonly used types of plug-in connections
- Universal testing terminals for the connection to any conductor.
- Additional headphones to precisely distinguish between the test signals
- Integrated LED flashlight.



Receiver LAN CableChecker RECV

Measuring Range Scan-Modus: 0...5 cm measuring depth

Inclusive: Transmitter LAN CableChecker TX, receiver RECV, adapter (RJ11, RJ45, BNC, TV-coax, F-adapter) testing terminals, headphones, batteries, carrying case

ORDER NO.	EAN-CODE	PU
083.060A	4 021563 671779	5

PT

2x 9V

HARD

AC-Tracer

NEW



Cable tracer set with transmitter and receiver

- Non-contact tracing of the transmission signal by the receiver
- Fast tracing of coherent electrical circuits.
- Location of lines in coherent, live electrical circuits
- Detection of fuse circuits in live installations
- Receiver with audible signal tone for locating measured objects
- Receiver with adjustable sensitivity for optimum fine adjustment
- Socket adapter for direct and fast testing in building installations.
- E27 lamp adapter for direct and fast testing in lamp circuits.



Receiver AC-Tracer RECV

Measuring range: 0...5 cm measuring depth

Inclusive: Transmitter AC-Tracer TX, receiver RECV, EURO connector, UK-plug (Great Britain), E27 Lamp adapter, battery, carrying case

ORDER NO.	EAN-CODE	PU
083.050A	4 021563 672103	5

PT

CAT II 300V

9V

HARD

Cable detectors

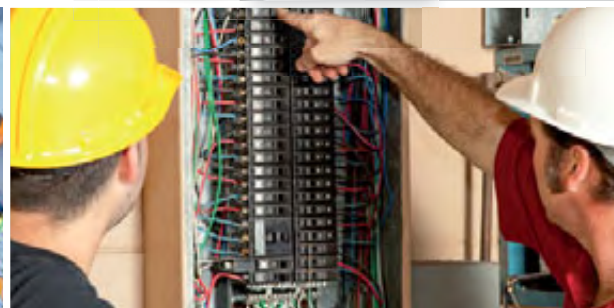
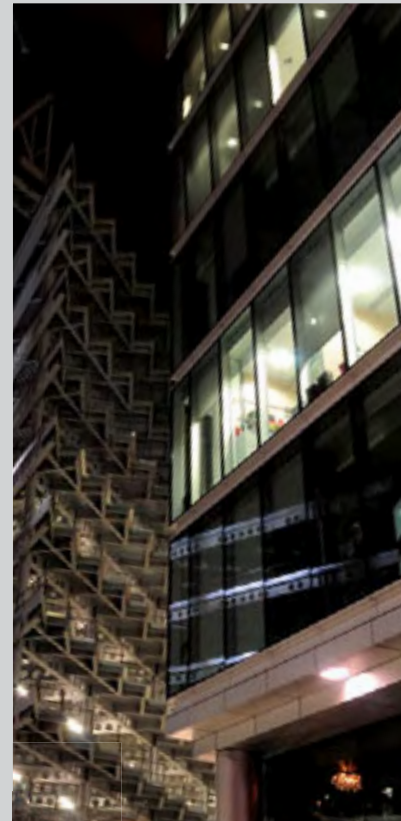
Transmitter/receiver line testers – Measurement with transmitter and receiver. The sender feeds coded signals into the cable to be checked. The signal is a modulated current that creates an electromagnetic field about the conductor. The receiver recognises this field, decodes it and is then able to find and locate cables with this signal. Ideal for taking stock of electrical installations and metal line systems.

For more detailed information, go to www.laserliner.com!



Inaccessible cables:
Line detection up to measuring depth of 1 m – e.g. suspended ceilings or underground cables

Easy location of fuses in switch boxes



CableTracer Pro

NEW



Universal, flexible cable tracer set including transmitter and receiver

- Non-contact tracing of the transmission signal by the receiver.
- Locates electrical cables, fuses, circuit breakers, metal pipes (such as heating pipes) and much more.
- Locates interrupted cables in existing installations and short-circuits in existing installation cables.
- May be used with or without mains voltage.
- High frequency of 125 kHz
- Display of DC and AC voltages.
- Signal coding allows as many as 7 senders to be used with one receiver and is thus ideal for complex installation settings.
- Integrated AC voltage detector
- Permanent AC voltage warnings
- Integrated illumination of measuring points
- Clearly arranged, illuminated displays

Inclusive: Transmitter CableTracer TX, receiver RECV, connecting cable, test prods, test clamps, batteries, carrying case

ORDER NO.	EAN-CODE	PU
083.070A	4 021563 671212	2

CableTracer TX
Inclusive: Transmitter CableTracer TX, connecting cable, test prods, test clamps, battery

083.070.1	4 021563 677153	1
-----------	-----------------	---

